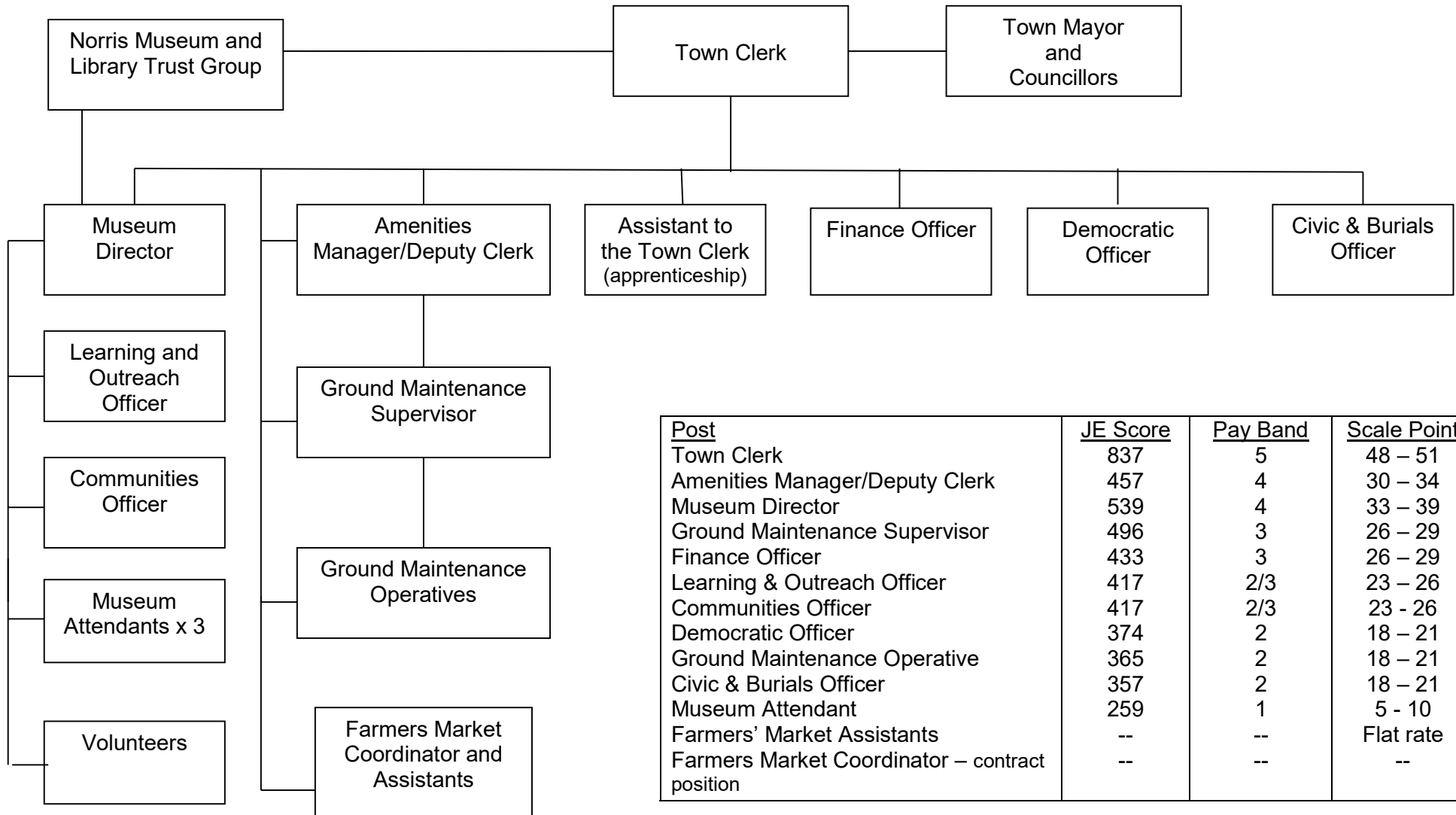


St Ives Town Council Staffing Structure 1 November 2018



<u>Post</u>	<u>JE Score</u>	<u>Pay Band</u>	<u>Scale Point</u>
Town Clerk	837	5	48 – 51
Amenities Manager/Deputy Clerk	457	4	30 – 34
Museum Director	539	4	33 – 39
Ground Maintenance Supervisor	496	3	26 – 29
Finance Officer	433	3	26 – 29
Learning & Outreach Officer	417	2/3	23 – 26
Communities Officer	417	2/3	23 - 26
Democratic Officer	374	2	18 – 21
Ground Maintenance Operative	365	2	18 – 21
Civic & Burials Officer	357	2	18 – 21
Museum Attendant	259	1	5 - 10
Farmers' Market Assistants	--	--	Flat rate
Farmers Market Coordinator – contract position	--	--	--